



THE INPUT LOGIC DJ TUTORIAL

Welcome to **Input Logic DJ**.

This program provides a **mixer** with **audio content**, which opens any number of **turntables** from its faders. The program **syncs** the mixer and turntables together and enables devices as controllers, including **multiple mice**, which come free with the software.

Input Logic DJ is easy to get into, and also provides remarkable depth for the progressive user.

The Tutorial that follows is divided into two areas:

1. TURBO-START – a recap of the initial *setup documentation* that comes with the software. This chapter guides the user through the opening setup, pointing out initial features and functions.



HOT SPOTS - a grouping of the primary 'go-to' features, gathered together into one *quick-read* from various locations of the interface.

Additional information is available online from www.InputLogicMedia.com – products email support is available from support@inputlogicmedia.com



1

INPUT LOGIC DJ TURBO-START

Congratulations on your purchase of Input Logic DJ ! With this purchase, you have entered a new chapter in the evolution of the computer interface.

Before you begin . . .

. . . be sure to plug **both** of the high-resolution mice that come with this software in to your computer USB ports before starting Input Logic DJ. These mice can also assist you in operating your computer on a daily basis.

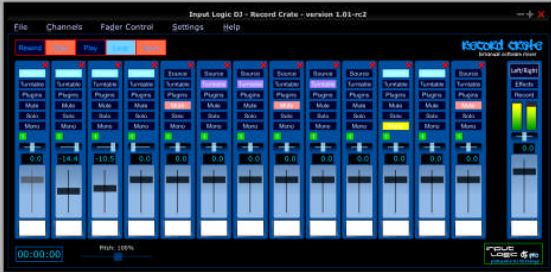
Getting started **INSIDE: FIVE STEPS TO INFINITE POSSIBILITIES >**

Install Input Logic DJ and click on the icon; the program will open in a manner similar to the image below:

Example 1 ~ Record Crate Mixer with Two Turntables



Any Turntable may be minimized to Pod size (left), or maximized to full size (right). The Record Crate Mixer (below) is resizable, and the GUI configuration possibilities are nearly endless. A partial feature list appears below.



Bimanual mixing, VST plugins, content, playlists, auto-sync, moving-fader automation, MIDI, scratch, time-stretching, beat-matching, pitch-shift, device mapping, user preferences . . . and much more

www.inputlogicmedia.com / A division of IMI Innovations, Inc.
Free upgrades are available from the DJ Products page



FIVE STEPS . . .

1 Settings / Devices

On the Record Crate Mixer taskbar, you will see a menu at the top called *Settings*. Select this menu and open the *Devices* tab. Each mouse that's moved will show up as 'active' in this tab. If you're right-handed, place a check mark by the mouse that moves when you move your right hand (and visa-versa). If you're operating a laptop, rub the pad to make sure that it's registering as active (but don't check it). Now move your left hand mouse to make sure that it's 'active'.

2 Settings / Audio

Now access the *Audio* tab in the *Settings* menu. Select the audio card that you would like to use, and be sure that the output boxes are checked. It is also recommended that you set the buffer settings fairly high for reasons that will be explained in the online tutorial.

3 Fader Control / Devices

You can mix with two hands on the Record Crate Mixer! Just go to *Fader Control* and move your left-hand mouse. The number of that mouse will be displayed. Using your right hand, select that mouse as the fader device, and check *Standard*. Set the sensitivity at around 200 to begin with. When you close out of the *Fader/Device* tab, you will note that the faders on the mixer will go up and down as you move the mouse. Clicking the left button moves you to the left. Clicking the right button moves you to the right. The Mixer comes loaded with sample content. Just pre-select the *Loop* and *Sync* buttons, and press *Play*. Practice grabbing one fader with your right hand and moving the faders in opposite directions. . .

. . . *you'll be an expert in 30 seconds!*

The next step is scratching.

4 Turntable

The Turntable is pre-loaded with wave a sample. While the mixer plays tracks, grab the turntable and scratch it . . . or rub the mouse cursor over the MIDI keys below to create new scratch effects. The scratch volume is adjustable on the Turntable.

5 Recording

Press the *Record* button on the mixer, name the recording...and perform. Re-click the *Record* button; the recording process will stop, and the wave will be available for playback in any wave player . The online Tutorial, Gearwire.com video, and www.InputLogicMedia.com website will assist you in getting deeper into this program.

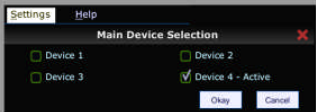
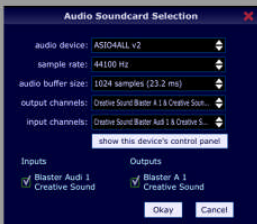

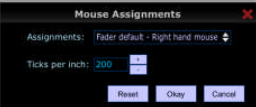


Free upgrades are available from the DJ Products page.

INFINITE POSSIBILITIES

EXAMPLE 1



File Channels Fader Control Settings Help

- 1**  < Select Primary Mouse
- 2**  < Audio Card
< Sample Rate
< Buffer Size
- 3**   < 2nd Mouse, Mixer Select
- 4**  Turntable >
MIDI >
- 5**  < Record

Turntables open from the mixer faders as plugins. They can be minimized to Pod size, or can be maximized for full feature access

EXAMPLE 1 (included in the software) also touches on some advanced features, such as assigning the Turntable crossfaders to the scroll wheel of the Right Mouse. Once the steps shown in the TURBO START example above are second nature, these and countless other possibilities will occur to you. Please write!

Expanding the Interface . . . on a Budget



Free upgrades are available from the DJ Products page

> **Sidescreens** (*see above*)

Input Logic DJ includes *multiple turntable* and *mutiple screen* support. Consequently, this expansion offers remarkable new potentials.

> **MIDI Keyboard Controllers** (*see above*)

MIDI support and integration is engineered into each Turntable. The inclusion of a simple MIDI controller enables multi-user layers.

> **Padmouse for Desktops**

If your laptop pad becomes integral to your performance, pad-based mice for desktops are also available (Recommended: *Cirque*)

Recommendations ~

Screen Resolution: **1152 X 864 (minimum)**
Recommended: **1280 X 1024 (or higher)**

(The Online Tutorial includes special setup examples for lower resolution monitors)

Software Asio/WDM support: **Asio4all.com**

Software MIDI playback support: **Roland/VirtualSoundCanvas**

The application comes with a number of Setup Examples along with 'just add content' GUI configurations to try. The online Tutorial, Gearwire.com video, and www.InputLogicMedia.com website will assist you in getting deeper into this program.

Support: **support@inputlogicmedia.com**

2

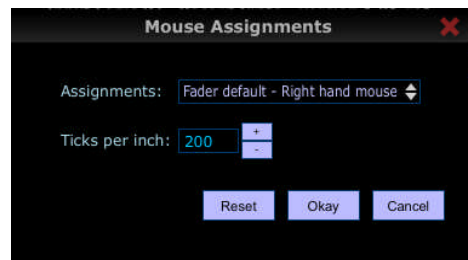
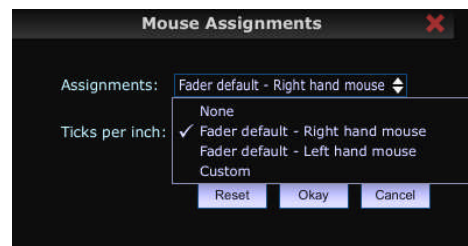
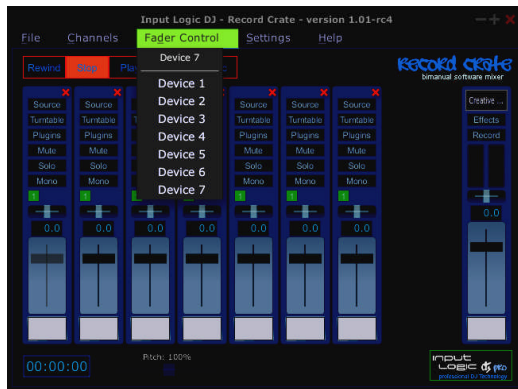
HOT SPOTS

A guide to the most often-used features of Input Logic DJ



MIXING WITH TWO HANDS

Select a 'second hand' for mixing from Fader Control on the record crate Mixer taskbar. The left-hand mouse will be latched to the faders, and will move from fader to fader with left and right clicks.

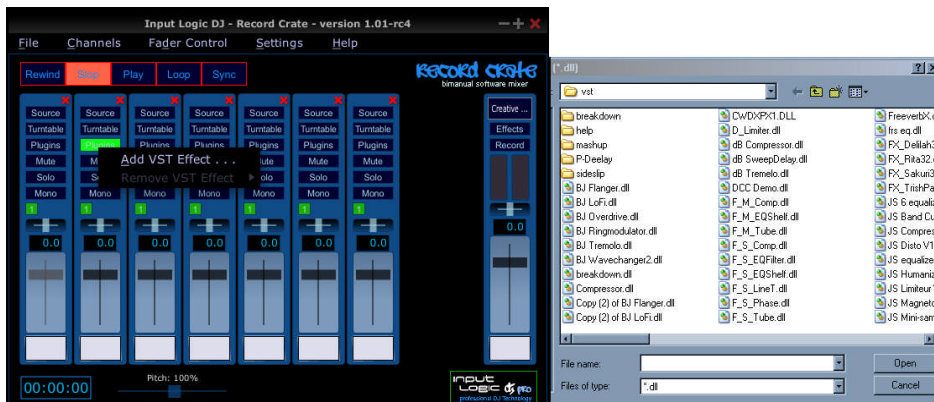


- 1) Move left mouse, select it as fader control device
- 2) Adjust sensitivity ('ticks'. suggested: 200)



VST MIXER PLUGINS

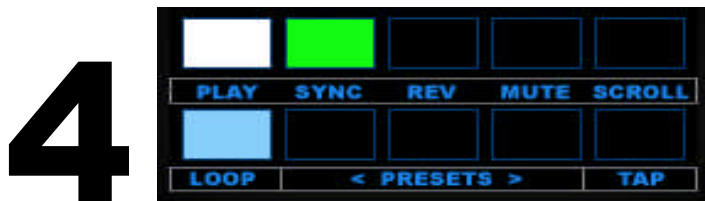
VST plugins are available from the Plugins button on each Mixer fader. Input Logic DJ provides interfaces for non-GUI plugins.





CROSSFADING AND SYNCING MULTIPLE TURNTABLES

Using the **laptop pad example**, select the pad as a Crossfader Control Device for two or more Turntables. Select the buttons PLAY On/Off and SYNC for each Turntable from the taskbar Controls drop-down, and select Reverse under the crossfader of one Turntable...and you're set.



1) The laptop pad should be selected as the Crossfader Control for each Turntable

2) A sensitivity setting of '40' creates a fast and accurate Crossfader

3) Select 'Custom' and a number of potential mouse button options appear. The laptop pad has 2 buttons (left and right). Select PLAY for the left button, and SYNC for the right button.

4). TRANSPORT: If the selected audio files are loops, select the LOOP function. To Sync the Turntables together, and with the mixer, press the right laptop button. To start or stop the Turntables, hit the left laptop pad button. If you move something in a manner that causes Sync problems, SYNC-PLAY will re-sync the Turntables.



FADER DETAILS

1) CUTFILTERS

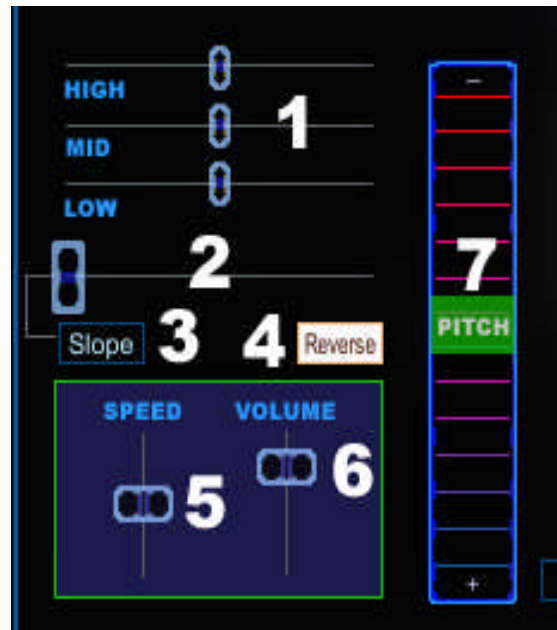
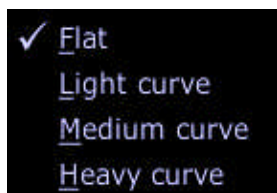
High, Mid and Low - Cut and Boost

2) CROSSFADER AREA

Located to the left of the Turntable,
Or directly beneath in Pods

3) SLOPES

1.01 features the slopes below. An additional DJ Slope will fade one TT in, while not affecting the other.



4) CROSSFADER REVERSE

Used when a) linking the crossfaders of two Turntables to a single device, and b) crossfading between the two audio files.

5) SPEED (TIME-STRETCH)

Changes the playback speed (tempo) of the audio file, without changing the pitch. A key beat-matching tool.

6) VOLUME

Controls the overall volume output of each Turntable.

7) PITCH

Increase or decrease sample playback speed without pitch change using the Turntable SPEED fader, and raise or lower the pitch with the Turntable PITCH knob. Change the pitch and speed of all audio files with the Pitch control on the Mixer.



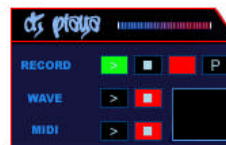
POD-SIZING MULTIPLE TURNTABLES

Create arrays of five, six and more Turntables by setting up, and then 'minimizing' each Turntable from the Window taskbar drop-down.



TURNTABLE PRESETS and AUTOMATION

Record all Turntable movements with the RECORD function in the dj playa, and then save the Turntable settings by right-clicking on the PRESETS buttons in the Transport.

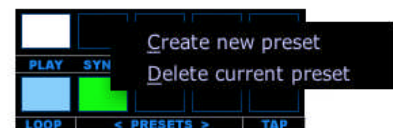


1 Press 'Record' in the DJ Playa

2 Turntable Performances

3 Playback All

4 Save Settings





MIDI

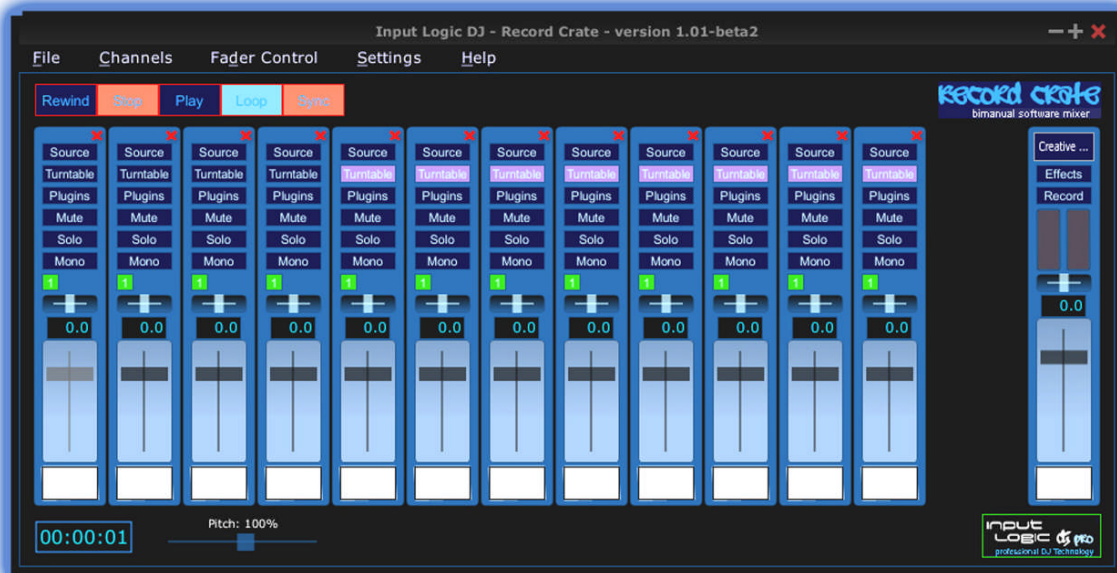
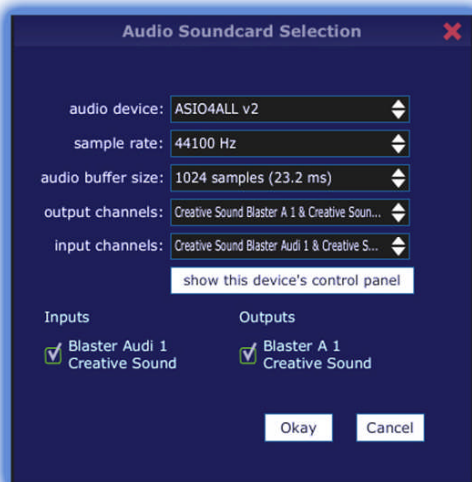
Use the cursor to access the MIDI keys under each Turntable. Select the ON button in the dj playa, to allow MIDI control of the Turntable MIDI keys.



CUE

- 1.01** Select an audio card output for headphone (cue) use on the Mixer, and send cue audio via the knob control on the right side of the Turntable to the selected audio card output. Connect headphones to the selected output for audio preview functionality. Free upgrades will soon include a 2-channel cue system for laptops, or other convenient setup configurations.

record crate / MIXER



TURNTABLES



Input Logic DJ – Turntable Pair, Plugins (below)

